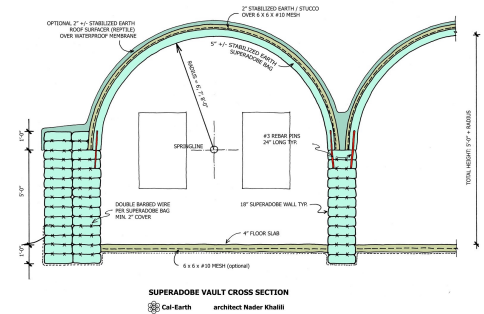
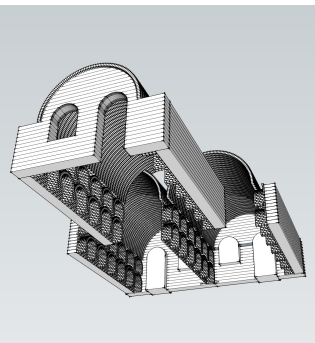
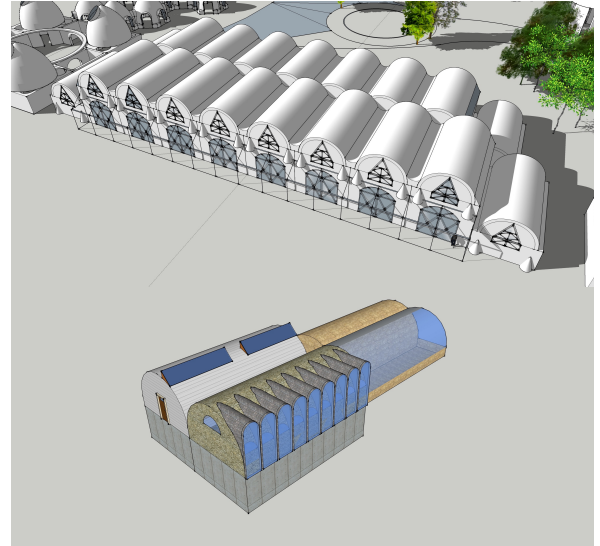


“AN ARCH IS LIKE A PRAYER, ITS STRENGTH IS IN ITS UNITY, ITS BEAUTY IN ITS REPETITION”



Vaulted House Design

for Eco-Villages and Refugee Shelter



Features of the 3-Vaulted House

1. 3-Vaulted House takes a traditional vault of 3.6m x 6.5m and turns it into the beautiful, modern 3-Vaults House typology.
2. It achieves this by the repetition of arches and by natural syncopated geometry.
3. Originally conceived by architect Nader Khalili for lunar colonies and successfully tested for seismic safety in America's highest seismic zone in California, using Superadobe (sandbag and barbed wire) new technology.
4. Updated design by Iliona Outram Khalili, for 2-3 storeys and masonry features.
5. Designed using sun and shade zones for a responsive building.
6. Cooled by thermal mass and design orientation of the vaults for air flow.
7. Warmed by sun, through passive solar design and active solar water heaters.
8. Built with earthen material and what is naturally available on the land.
9. Uses the materials of war to create the building blocks of peace.
10. Sustainable Wealth is created by empowering a local community to build.
11. A multi-cultural community development process.
12. 3-Vaults Typology is a versatile, useful product for not only houses but also other buildings such as shops, schools, malls, community centres, clinics etc.
13. May be combined with masonry domes, apses, arches, or conventional designs.